



Salts Mill Yellow Lab, First Floor, Canalside Building



About Salts Mill...

Salts Mill is a place for art, dining, shopping and business in one stunning historic building located in the UNESCO World Heritage site of Saltaire. Parking and entrance are free. Inside you can admire our very big collection of works by David Hockney, be inspired by the very best in independent retail and enjoy our bustling restaurants and cafes.

The Mill is also a place of work for over 1000 people - home to a variety of businesses from technology to landscape architecture and graphic design.

The Mill opened in 1853, the centrepiece of Sir Titus Salt's utopian vision of Saltaire. He built the adjoining model village to house his workers. Cloth production at Salts finally ceased in 1986, and the following year the Mill was purchased by the late Jonathan Silver, who re-imagined it as a place where culture and commerce could thrive together.

The offices.....

Located on the first floor overlooking the picturesque canal side of Salts Mill, completely self-contained with their own independent entrance the offices which total approximately 5000 sq ft are available immediately either furnished or unfurnished for a rental of £30,000 per year. Lease terms to be negotiated between parties. The space has the benefit of its own kitchenette and dining area, toilet facilities, board/meeting room, 2 manager's offices and HVAC system.

Directions and Parking....

By train - Saltaire train station is just across the road from the Mill. It takes approximately 15 minutes to / from Leeds or Bradford.

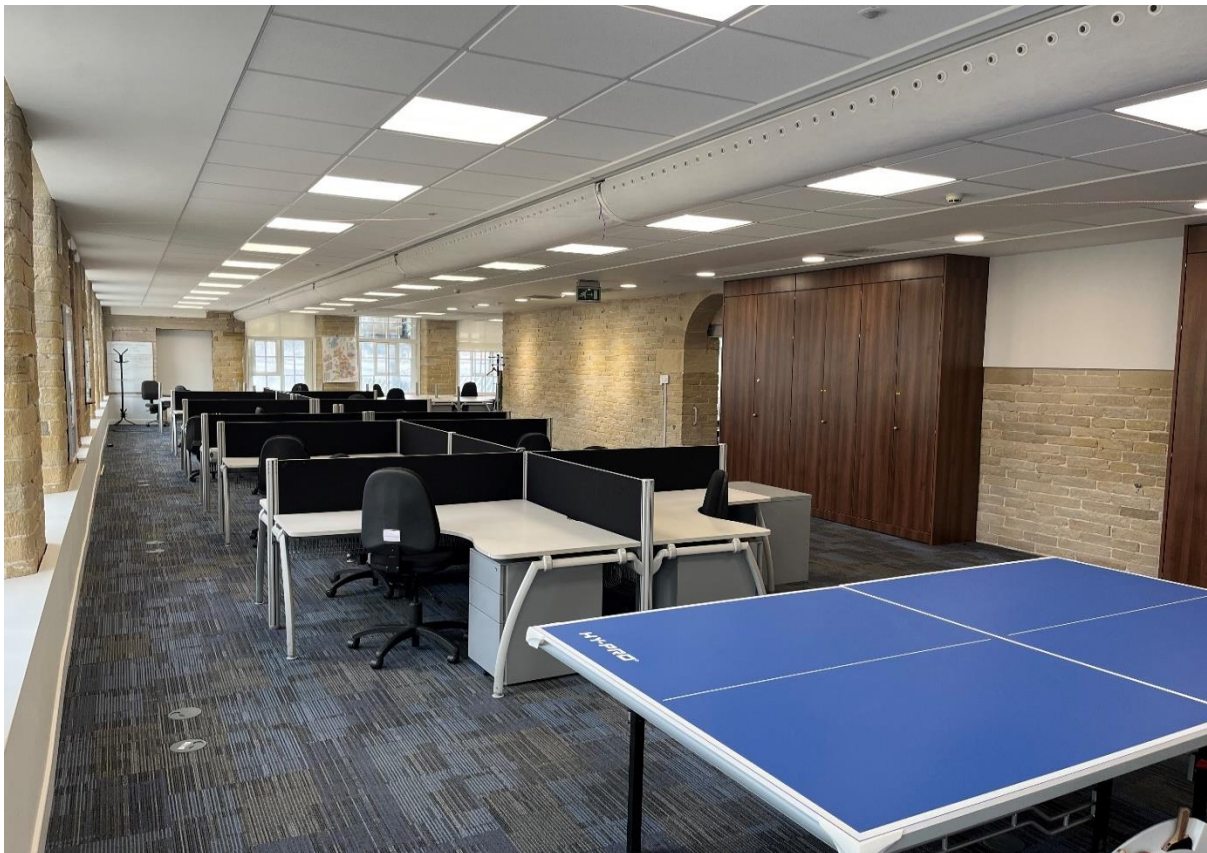
By car - Saltaire is 4 miles North of Bradford, 15 minutes from the M606 and the motorway network. Follow the brown road signs from the motorway.

Sat nav users: entering our correct postcode brings you into the wrong side of the Mill for the car park. Instead, please set your Sat Nav to BD17 7EF. When it tells you you've reached your destination, keep going along Salts Mill Road following the brown signs - you'll pass a big red brick chimney on your left as you cross the canal and The Waterfront, an office building, on your right, then you'll see the Mill at the end of the road. Proceed through the gates into the free Salts Mill visitor's car park on the right.

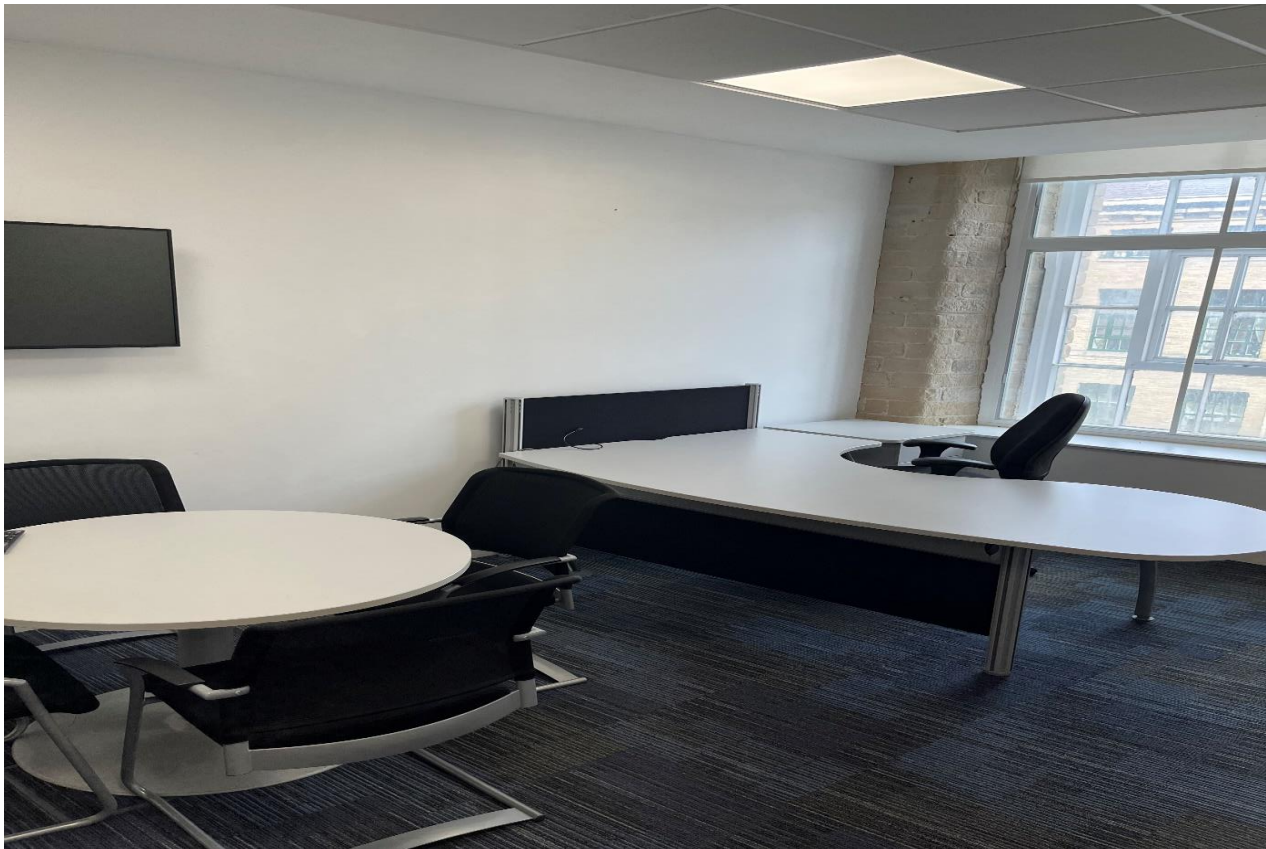
For all enquires please phone 01274 531163 or email: simon@saltsmill.org.uk

Salts Mill, Victoria Rd, Saltaire, West Yorkshire BD18 3LA

Internal Images









Other Matters

These particulars are a general outline for the guidance of intending lessees and do not constitute part of an offer or contract. All descriptions, floor areas and references to permissions and condition and other details are given in good faith and are believed to be correct but any intending occupiers should not rely on them as statements or representations of fact and must satisfy themselves as to the correctness of each item. VAT is applicable on all prices quoted.